

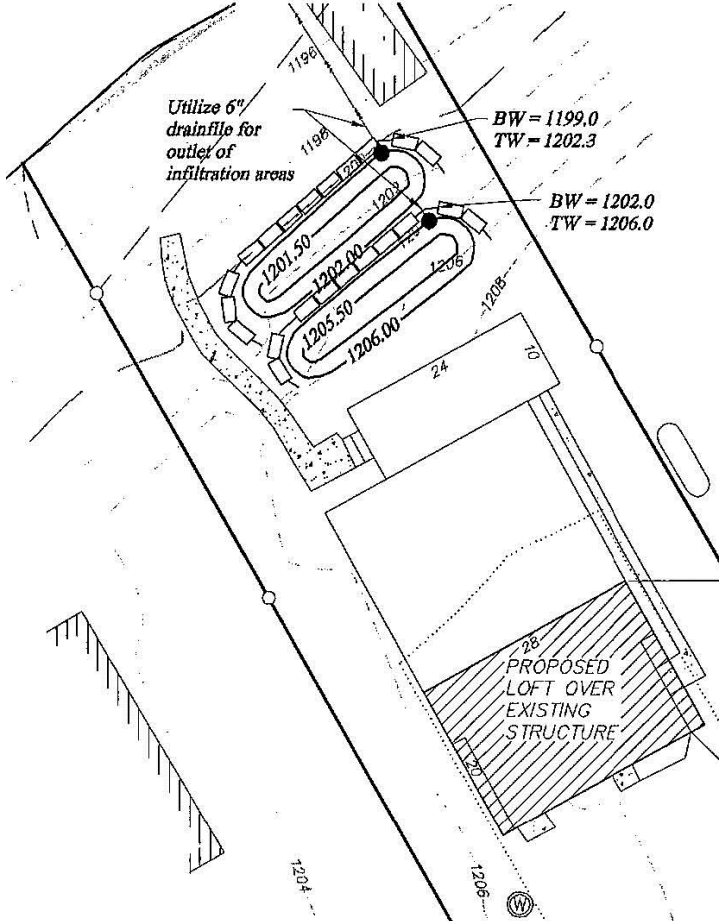
Stormwater Examples Handout



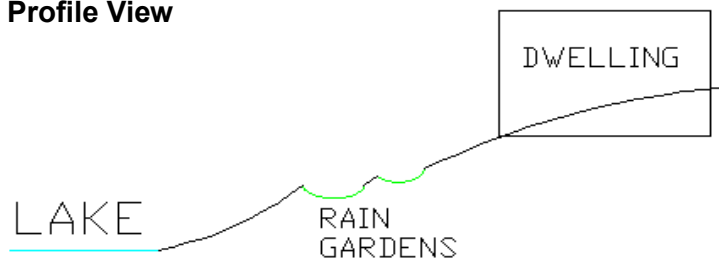
Project Details:

BMP: Rain Garden

Impervious surface = 1488 sq. ft
Required stormwater storage volume = 124 cu. ft
Required storage area = 248 sq. ft (for a 6" depth)
Actual storage area = 448 sq. ft (to top of side slope)
 BW = Bottom of wall, TW = top of wall



Profile View



Project Details:

BMP: Infiltration Basin

Impervious surface = 5689 sq. ft
Required stormwater storage volume = 474 cu ft
Required storage area = 569 (for a 10" depth)
Actual storage area = 1000+ sq. ft (to top of side slope)

Existing Impervious	
Buildings	1376
Driveways	2667
Walkways	180

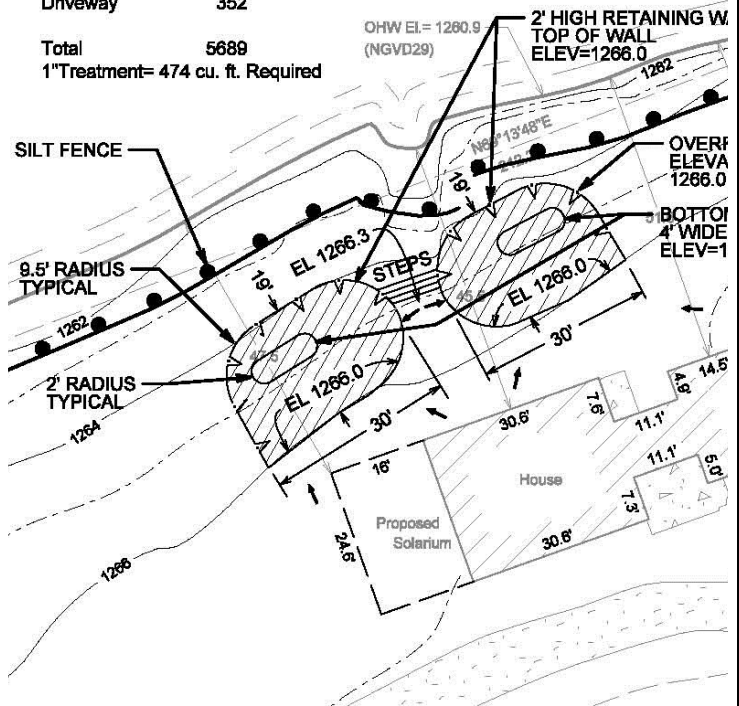
INFILTRATION BMP
VOLUME = 478 CU FT
10" DEEP BMP
SIDESLOPE = 3:1 MAX

New Impervious	
Garage	720
House Addn	394
Driveway	352

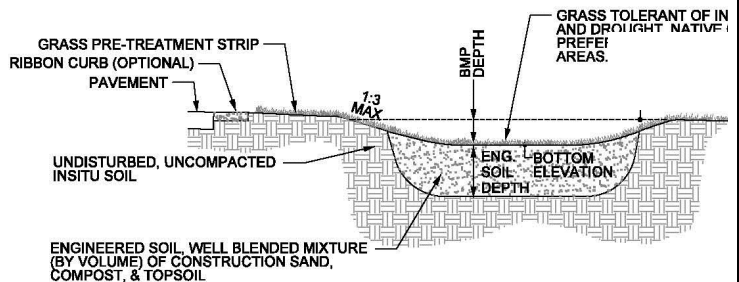
Total 5689
1" Treatment = 474 cu. ft. Required

Tame Fish

RD Lake



Profile View



Contact Crosslake Planning & Zoning at 218-692-2689 or

crosslakepz@cityofcrosslake.org Visit our website: www.cityofcrosslake.org